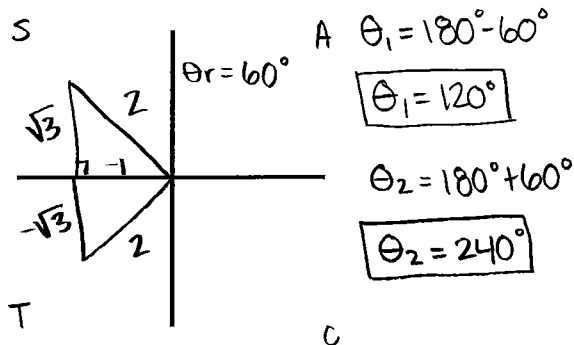


More Trigonometry Review Questions

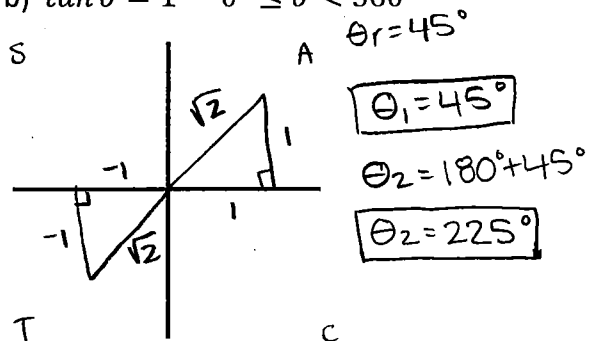
Name KEY

1. Solve for θ .

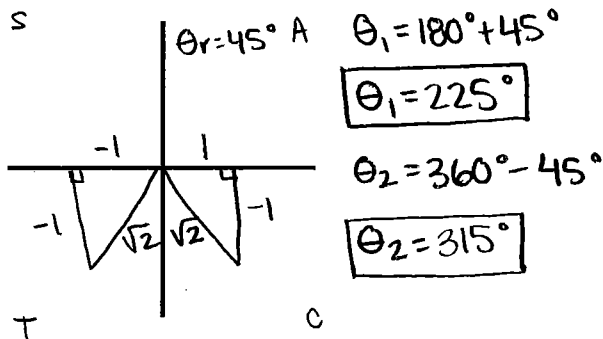
a) $\cos \theta = -\frac{1}{2}$ $0^\circ \leq \theta < 360^\circ$



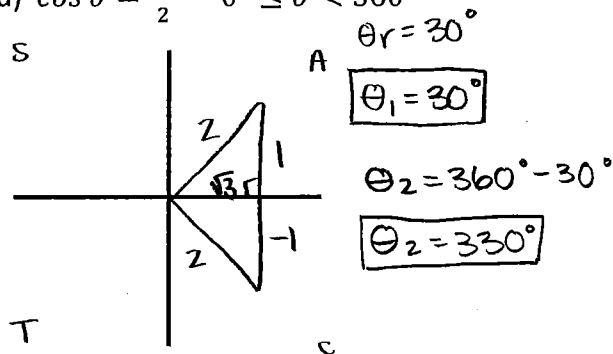
b) $\tan \theta = 1$ $0^\circ \leq \theta < 360^\circ$



c) $\sin \theta = -\frac{1}{\sqrt{2}}$ $0^\circ \leq \theta < 360^\circ$

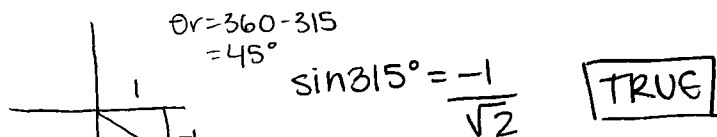
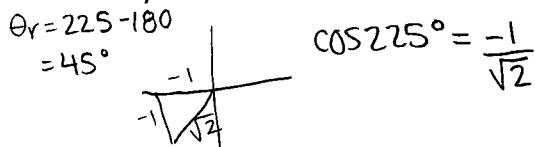


d) $\cos \theta = \frac{\sqrt{3}}{2}$ $0^\circ \leq \theta < 360^\circ$

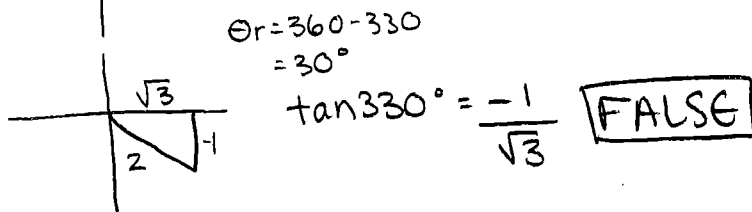
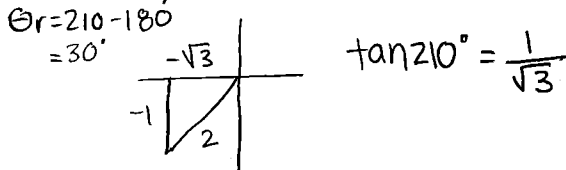


2. Without using a calculator, determine whether each statement is true or false. Show work.

a) $\cos 225^\circ = \sin 315^\circ$



b) $\tan 210^\circ = \tan 330^\circ$



c) $\sin 150^\circ = \cos 300^\circ$

